

# The new kiloclave inert Models

1. Completely metal-free pressure reactions
2. High pressure version with Tantalum components

Developed for processing of highly corrosive media  
No interference of reactor material with process

- versatile, modular system
- interchangeable reactors
- easy operation (of heavy reactors)
- safe, reliable
- configurable to your specific need



## Facts and figures

- 1 – 20 liters
- -1 to + 60 bar
- -20°C to +200 °C
- CE / PED
- ATEX / non-Ex

# The new Büchi kiloclave inert – the solution for processing of corrosive media:

- easy handling of interchangeable 1 – 20 liters glass lined steel reactors by comfortable stand with lifting-, lowering-, tilting function (360°)
- powerful mixing with ceramic stirrer drive

## kiloclave inert: completely metal-free



10 liters kiloclave, 6 bar, 180 °C  
ceramic stirrer drive and stirrer, ATEX

Wetted parts: glass lined steel, ceramic, PFA, PTFE, (PEEK)

## kiloclave inert: Tantalum version



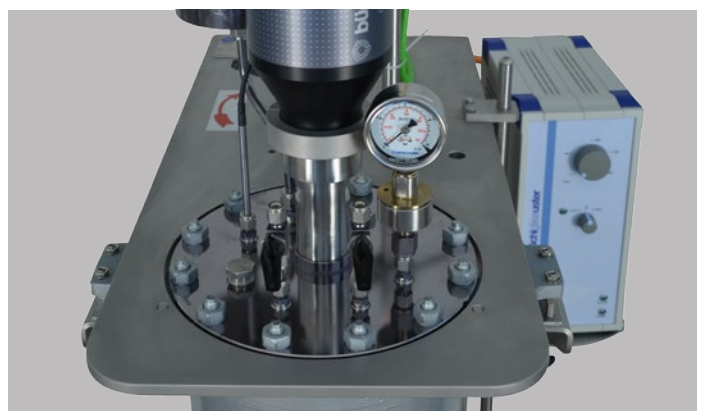
10 liters kiloclave, 60 bar, 200 °C  
non-EX stirrer drive (ceramic)  
Tantalum gassing stirrer

Wetted parts: glass lined steel, ceramic, Tantalum, PTFE

## Cover plates and fittings



PTFE or PEEK cover plate with PFA valves



Cover plate and valves made of Tantalum